

Factsheet: The Early Years Development Instrument (EDI)



What is the EDI?

The EDI is a questionnaire used province-wide to measure patterns and trends in children’s developmental health. HELP has been collecting EDI data since 2001 and over this period has collected data for over 245,000 kindergarten children in BC.



How does the EDI work?

The EDI was designed to assess population trends and not as an individual diagnostic tool. The questionnaire includes 104 questions arranged in five scales that measure core areas of child development. These areas are strong predictors of health, education and social outcomes in adolescence and adulthood. Kindergarten teachers complete EDI questionnaires for students in their classroom in February of the school year once they have known their children for a while. Teachers participate in a standardized EDI training session prior to completing the questionnaire.¹

What are the EDI scales?



1. Physical Health & Well-being

Assesses children’s gross and fine motor skills, physical independence and readiness for the school day.



2. Social Competence

Assesses children’s overall social competencies, capacity for respect and responsibility, approaches to learning, and readiness to explore new things.



3. Emotional Maturity

Assesses children’s prosocial and helping behaviours, as well as hyperactivity and inattention, and aggressive, anxious and fearful behaviours.



4. Language & Cognitive Development

Assesses children’s basic and advanced literacy skills, numeracy skills, interest in math and reading, and memory.



5. Communication Skills & General Knowledge

Assesses children’s English language skills and general knowledge.

¹ <http://earlylearning.ubc.ca/media/edibc2016provincialreport.pdf>

Definition of vulnerability

Vulnerable children are those who, without additional support and care, are more likely to experience challenges in their school years and beyond. Vulnerability is assessed for each of the five EDI scales.

How many kids are vulnerable?

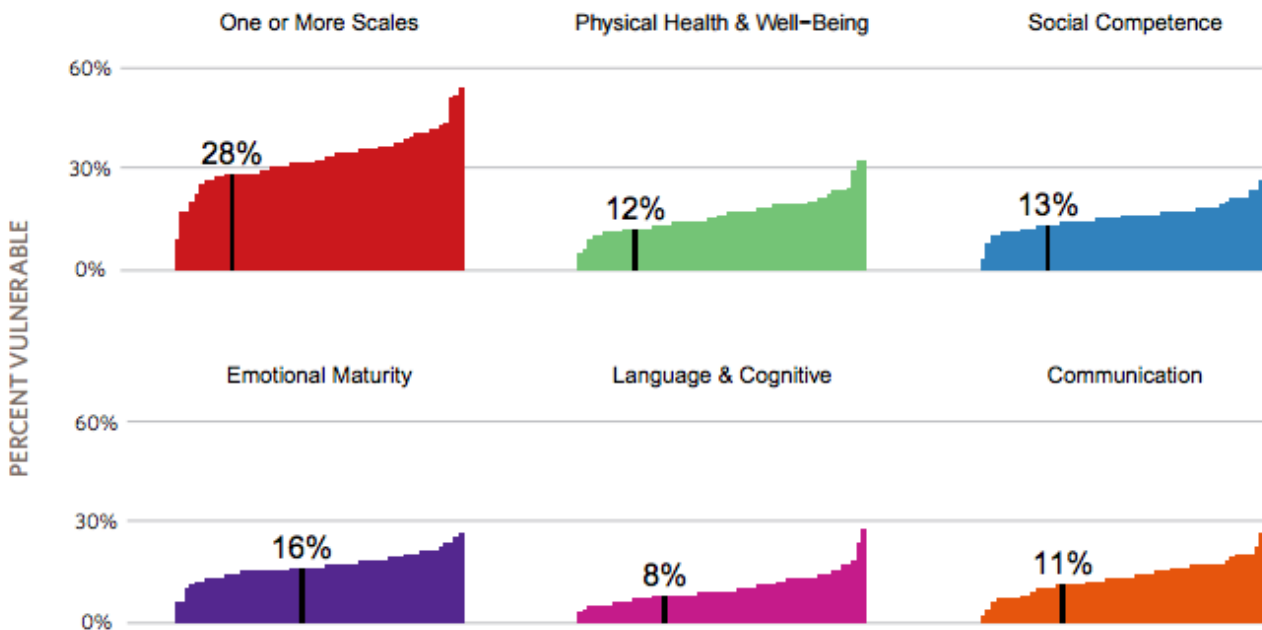
Scientists know that there will always be kids who are vulnerable. They estimate that this is 7-11% of the population. The current vulnerability rate in BC is 32.2%. Early life experiences make a significant difference in reducing the vulnerability rate.

How are kids in Delta doing?

Delta compared to other school districts.

This figure shows the vulnerability in each school district in BC. The black line is the vulnerability rate in Delta for the most current data. We want low vulnerability. 28% of children in Delta are vulnerable on one or more scales.

Figure 5. Delta results in a provincial context

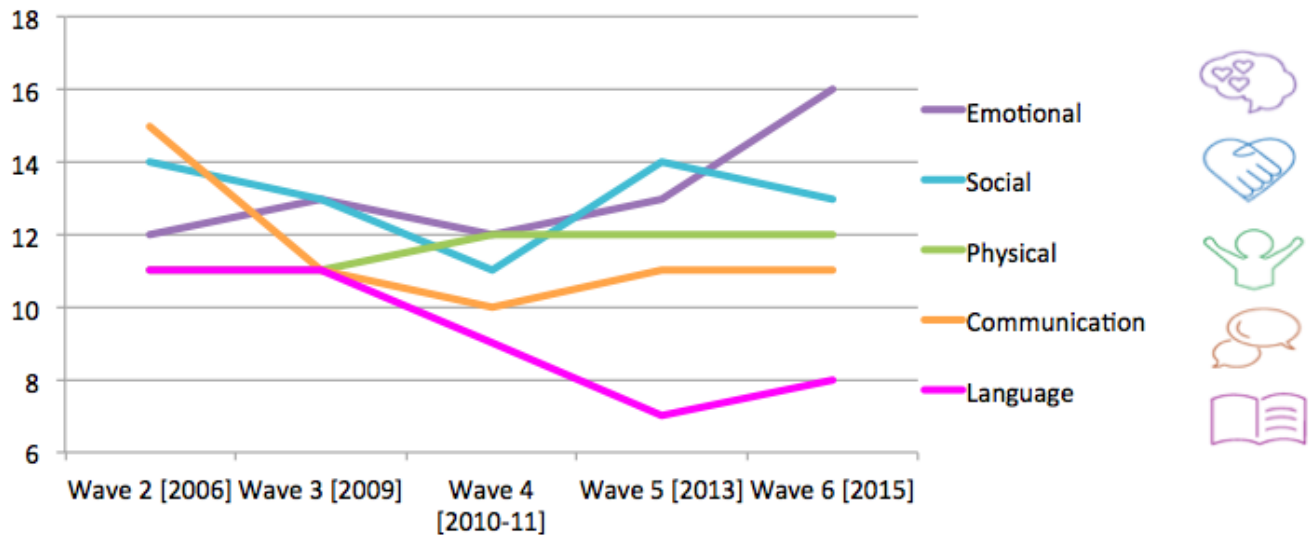


Changes in vulnerability over time

This table shows the changes in vulnerability over time in Delta. You can see where vulnerability is changing and where it remains the same.

	WAVE 2 2004-07	WAVE 3 2007-09	WAVE 4 2009-11	WAVE 5 2011-13	WAVE 6 2013-16
Physical	11	11	12	12	12
Social	14	13	11	14	13
Emotional	12	13	12	13	16
Language	11	11	9	7	8
Communication	15	11	10	11	11
One or More Scales	30	27	27	28	28

The graph below shows the same information as the chart above. It is the changes in vulnerability over time in Delta.



More information

The Human Early Learning Partnership has a website dedicated to the EDI. On it you can find a provincial report, as well as a community profile for Delta. With their online map, you can see how vulnerability has changed over time in each neighbourhood.

To access the Delta Community Profile, click [here](#)

To access the Provincial Report, click [here](#)

To learn more about us, see www.DeltaKids.ca or [email](mailto:andrea.lemire@hlep.ca) Andrea Lemire, Delta Kids Coordinator